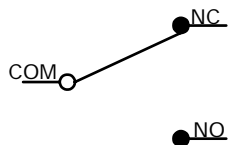


P.C. MOUNTING

O.P. (MM)	P.T. (MM)
6.8 ± 0.5	1.8 MAX.

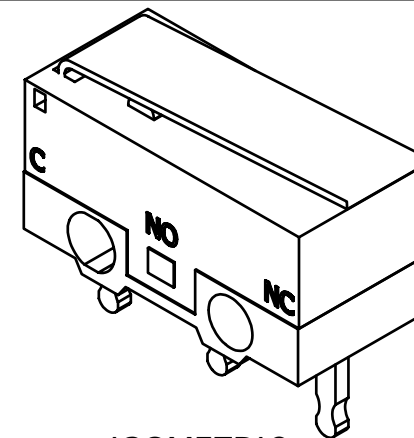
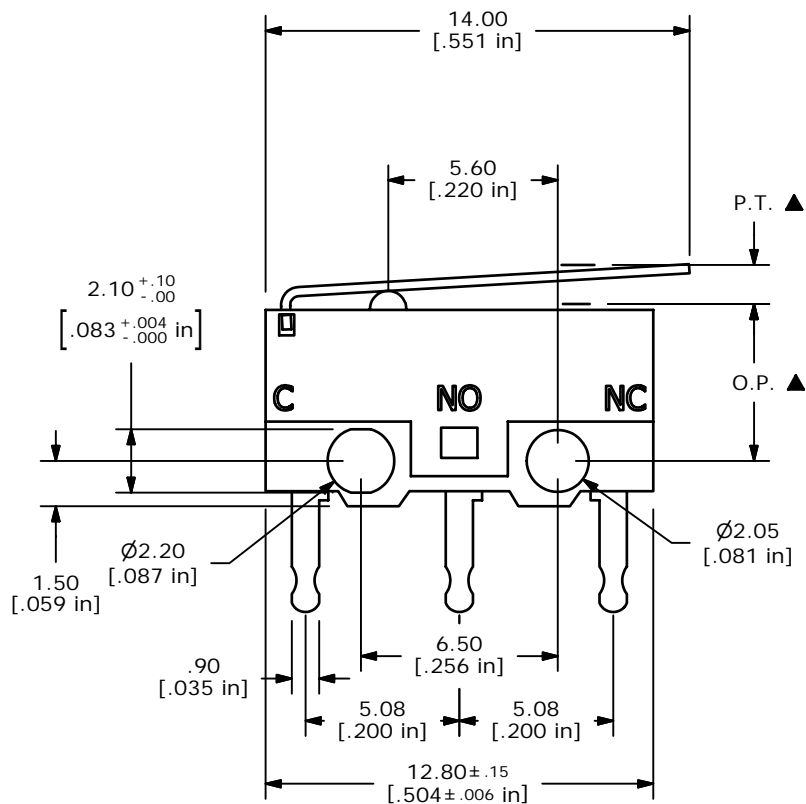
O.P. = OPERATING POINT  
P.T. = PER-TRAVEL



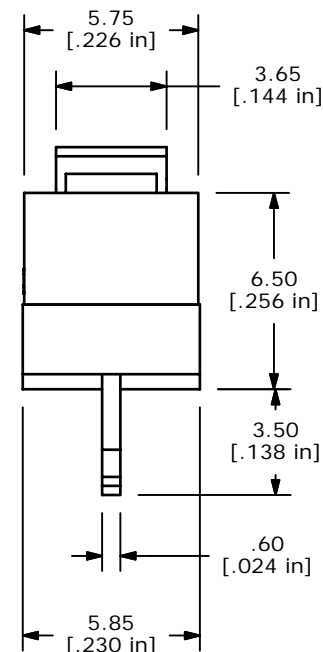
CIRCUIT: SPDT

NOTES:

- ALL DIMENSIONS IN MM [INCH]
- GENERAL TOLERANCE: X.X=± 0.4  
X.XX=± 0.25
- RATING: 3A @125VAC UL, CSA APPROVED
- OPERATING FORCE: 45± 5 GRAMS
- OPERATING TEMP: -25°C TO 85°C
- ELECTRICAL LIFE: 300,000 CYCLES MIN.
- INSULATION RESISTANCE: 100 MEGA-OHMS
- DIELECTRIC STRENGTH: 1000V RMS AT SEA LEVEL
- ▲ DENOTES CRITICAL PARAMETER.
- 2002/95/EC (ROHS) COMPLIANT
- CONTACT MATL. SILVER



ISOMETRIC



B	17475	REVISED AND REDRAWN	7/16/07	BF
REV	PCR NO	DESCRIPTION	DATE	BY

TITLE <b>DM0850301F045P1A</b>				
SCALE	DATE	DR	DWG	REV
4:1	7/16/2007	BF	P030009	B

THE INFORMATION CONTAINED IN THIS DOCUMENT IS PROPRIETARY TO E-SWITCH AND IS NOT TO BE COPIED OR TRANSFERRED